

PERFORMANCE DATA

PAVER (TIER 3)

BF 900 C



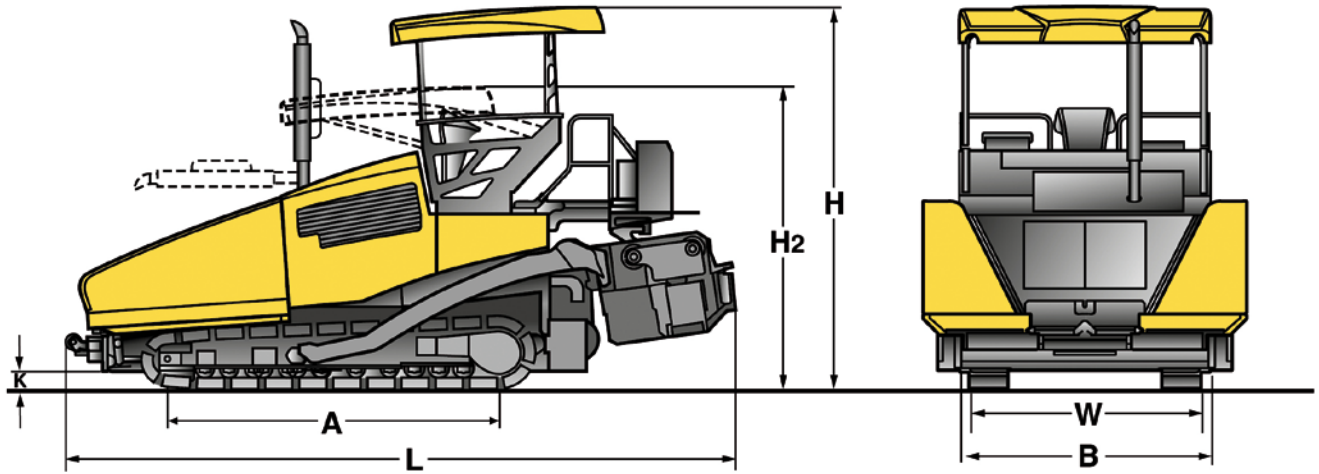
Greatest durability



Shorter set-up times



Exemplary efficiency



Dimensions in mm

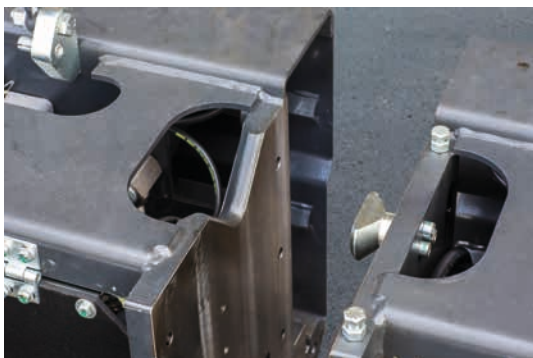
	A	B	H	H₂	L	W
BF 900 C S 500	3360	2550	3865	3055	6800	2550
BF 900 C S 600	3360	3000	3865	3055	6800	3000



Save up to 17 % fuel – demand-driven hydraulics – with BOMAG ECOMODE.



Heats up nearly 60 % quicker – unique MAGMALIFE heating system.



Attaching is up to 48 % quicker – thanks to the BOMAG QUICK COUPLING SYSTEM.



The right position in each situation – the comfortable driver's cabin.

Technical Data	BOMAG BF 900 C S 500	BOMAG BF 900 C S 600	
Weights			
Operating weight CECE	kg	22300	22800
Dimensions			
Transport length	mm	6800	6800
Transport width	mm	2550	3000
Transport height	mm	3055	3055
Travel characteristics			
Travel speed (1)	km/h	0-4,5	0-4,5
Working speed (1)	m/min	0-25	0-25
Drive			
Engine manufacturer		DEUTZ	DEUTZ
Type		TCD 6.1 L6	TCD 6.1 L6
Exhaust classification.....		Stage III a / TIER 3	Stage III a / TIER 3
Cooling		water	water
Number of cylinders.....		6	6
Rated power ISO 3046.....	kW	160	160
Speed	min ⁻¹	2000	2000
Crawler assembly			
Crawler track.....			
-Axle base	mm	2700	2700
-Width.....	mm	300	300
Hopper			
Capacity	m ³	7,2	7,2
Width (wings open).....	mm	3320	3320
Width (wings closed).....	mm	2250	2250
Length	mm	2010	2010
Filling height (middle)	mm	500	500
Scraper belt / auger			
Number		2	2
Width	mm	400	400
Speed	U/min	60	60
Individual control.....		Standard	Standard
Reversing operation		Standard	Standard
Conveyor auger			
->Number		2	2
->Auger diameter	mm	450	450
->Rotary speed	U/min	95	95
->Reversing operation.....		Standard	Standard
Screed			
Screed type		S 500	S 600
Basic width retracted	mm	2550	3000
Basic width extended.....	mm	5000	6000
Max. working width.....	mm	9000	10000
min. width with reduction skids	mm	1800	2300
Mat thickness	mm	300	300
Smoothing plate depth.....	mm	400	400
Smoothing plate thickness.....	mm	15	15
Heating		Electric	Electric
Crown	%	-2,5 ... +4,5	-2,5 ... +4,5
Tamper frequency.....	Hz	0-29	0-29
Vibration frequency	Hz	20-58	20-58
Basic weight.....	kg	3900	4200
Filling capacities			
Fuel.....	l	315	315
Hydraulic oil.....	l	160	160

Technical modifications reserved. Machines may be shown with options. The actual machine weight depends on the respective configuration.

Standard equipment

- SIDEVIEW
- Driver's seat: with swivel and side-shift
- Protection; dashboard
- Hydraulic hinged roof
- Digital display for machine management
- Separate control of hopper wings
- Cleaning kit
- Hydraulic, height adjustable auger
- Track scraper
- L.C.S. Screed relief and traction increase system
- Screed temperature control
- Cast heating elements
- Automatic screed heating
- Hydraulic screed control
- Crown adjustment
- 6 work lights
- Side control of auger/scraper belts
- Tools
- Rubber track plates
- 30 kVA generator
- Socket 2x240 volt
- 2 proportionally controlled and reversible wear-resistant cast augers; screw blades separately replaceable
- 2 independent and reversible scraper belts; high-wear resistant plates

Optional equipment

- Hydraulic hopper front flap
- Hydraulic/electric movable platform
- Hydraulic crown adjustment
- Hinged side plates
- Heated side plates
- Side windscreened platform
- Seat warmer
- Asphalt steam extraction
- Biologically degradable hydraulic oil
- Central lubrication system
- L.C.S. half-sided
- Optional paint finish
- S 500 + S 600 extensions:
 - 250 mm
 - 500 mm
 - 750 mm
 - 1250 mm
- Reduction shoe
- Edge shaper 45°/60°
- Light balloon
- Socket 2x240 volt
- Levelling systems:
 - Height and cross-slope sensing by means of ultrasonic or mechanical sensors

